



# CORPORATE EXPERIENCES

2025 | 2026



## ABOUT US

*We can organise a set of outdoor based group activities and events that are perfect for any corporate experience. A chance to step away from the workplace to connect with nature, each other and yourself! The Isle of Wight is a unique destination as it is just a few hours from London, but it will really feel like you have escaped to a completely different environment. Even if you're already on the island, our secluded spot down south offers the ideal setting for your corporate experience.*



*Sibbecks Farm is nestled in the Isle of Wight National Landscape featuring a stunning coastline, rolling downlands, & beautiful woods and forests. We take pride in offering experiences that reconnect you with this natural environment while ensuring high levels of comfort and luxury.*

*Our corporate experience can be bespoke to your needs - whether it's to initiate a new project, team building, or simply a 'thank you' to your employees for their hard work - we can put together an agenda to suit. We have collaborated with a wide range of local businesses to bring you activities such as foraging, bushcraft, gin tasting or botanical cocktail making and drawing workshops.*



*All activities follow the nature and connection theme meaning whatever you choose, it ties together for a cohesive day.*

*You'll find plenty of inspiration and further detail within the following pages.*



## CONNECT WITH NATURE

*“We learned about a variety of edible plants to incorporate into our breakfast - including how you can eat stinging nettles safely - and we picked fresh produce from the farm ahead of a campfire breakfast, which we cooked together.”*



## CONNECT WITH YOURSELF

*“It is also brilliant to see people taking some time out by themselves, walking around our meadow or sitting in a quiet spot reflecting.”*

## CONNECT WITH OTHERS

*“The team were fully engaged, navigating through various challenges that encouraged teamwork and creativity.”*



## LEAVE IT TO US...

*Both Paul and Vicki, who own and run Sibbecks Farm, have corporate business backgrounds and know the importance of delivering a valuable experience in return for taking your team out of the office. Vicki has **15+ years of experience** in facilitating teams and leadership events and will manage the running of the day for you, so that you can really focus on connecting with your team and taking time out. We'll guide you through the activities, organise transport to and from the venue, catering & accommodation as required.*

*You can rely on us to deliver an exceptional corporate experience for your organisation!*



# OUR SIGNATURE 'IN THE WILD' PACKAGE

This is our **most popular experience** and is chance to immerse yourselves in the great outdoors whilst engaging in a set team building activities designed to promote teamwork, problem-solving, and effective communication. There are also moments to simply relax and enjoy your surroundings and informally chat with your colleagues outside the work environment.



## INTRODUCTION

We start the day at Blackgang Chine viewpoint on the south of the Isle of Wight with a briefing about the day ahead and some fascinating facts about this historic part of the island.



## PICNIC LUNCH WITH A VIEW

Prepare yourselves for the challenges ahead with some tasty lunch at the top of St Catherine's Down, next to the medieval light house known locally as the 'Pepperpot,' with views out to sea across Chale Bay and onto possibly the Island's most recognisable landmark 'The Needles Rocks'.



## NATURE THEMED SCAVENGER HUNT & MAP READING CHALLENGE

In small teams, navigate your way to Sibbecks Farm through some of the most stunning countryside on the island, whilst identifying & collecting items from your surroundings. Points will be awarded to each team for their successes.



## FIRESIDE REFRESHMENTS

Enjoy tea, coffee, biscuits & toasted marshmallows around the campfire at Sibbecks Farm. A chance to informally chat with your colleagues outside the work environment.



## BUSHCRAFT TRAINING & TEAM CHALLENGE

Learn the art of fire lighting from our bushcraft expert. In small teams, put into practice your newly acquired fire lighting knowledge and construct a shelter to protect you from the elements.



## AL FRESCO STYLE DINNER

Enjoy a truly special al-fresco dining experience in our delightful glamping meadow surrounded by wildflowers & grasses. Optionally, we can move this meal into our 18th century barn if the weather is not behaving itself!

**Duration:** 12pm – 6:30pm | **Transportation:** Minibus pick up & drop off at chosen island ferry port.

## OTHER ACTIVITIES

Want something other than our signature package? Pick & choose from the below options to create **your own bespoke awayday**. Tell us what you need, and we'll do the rest!

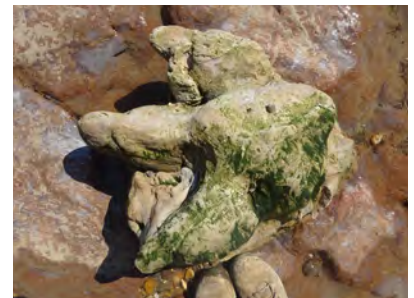
### LEADERSHIP AND TEAM FACILITATED SESSION

Vicki is an experienced team facilitator. If you have a key business problem to solve, a strategy to develop or simply want to work out how to get the best out of each team member as part of developing a highly performing team – Vicki can lead your team through discussions, brainstorming and activities to achieve your desired outcome.



### DINOSAUR FOSSIL HUNTS

The beaches of the Isle of Wight are one of the best places to find dinosaur fossils in Europe. Professional guides will take you on a journey back to a time dinosaurs roamed the Isle of Wight, over 125 million years ago. Fossil finds are common even for in-experienced hunters and at a minimum it will be possible to find dinosaur footprints and trackways.



### FORAGING EXPERIENCE

Guided by our expert forager, discover amazing wild foods that the countryside around Sibbecks Farm has to offer. Your guide will share some recipes with you, as well as loads of tips and tricks for identifying ingredients and their medicinal and nutritious benefits. This hands-on adventure includes fun team challenges and learning opportunities.



### DRAWING WORKSHOP

Our experienced illustrator, Katy Rose Design, will take you through the basics of capturing the magic of nature in art. This will be followed by a guided nature spotting walk around the site to provide inspiration before creating a nature drawing using any of our varied materials. Our illustrator can also provide a mural backdrop to add your creations to, giving you a great memory to take back to the office with you.





### WELL-BEING AND MINDFULNESS EXPERIENCE

*This experience is designed to allow you to rest, reflect and reconnect through various techniques such as mindfulness, meditation and journaling whilst celebrating the beauty of the natural world. Activities will include, group-led mindfulness & meditation, nature craft creation, hammock relaxation, campfire conversations, symbolic burning release, & journal prompts.*



### GIN TASTING EXPERIENCE

*Taste a range of artisan gins distilled on the Isle of Wight. Each of our gins offers a gorgeous mix of flavours and taste experiences, often created using locally grown or foraged botanicals.*



### SURFING

*A 1.5 hour introduction to the sport of surfing under the guidance of qualified instructors. Learn how to catch a wave whilst soaking up the spectacular island coastlines. Wet suits & boards included.*



### COASTEERING

*This is an adventure activity that treats the coastal environment as a giant natural playground. A 2-hour session will involve sea swimming along the cliff line around the headlands, scrambling across the rocks, discovering the caves and using the cliffs for jumps. Wet suits, buoyancy aids & helmets included.*







# LOCATION & GETTING HERE



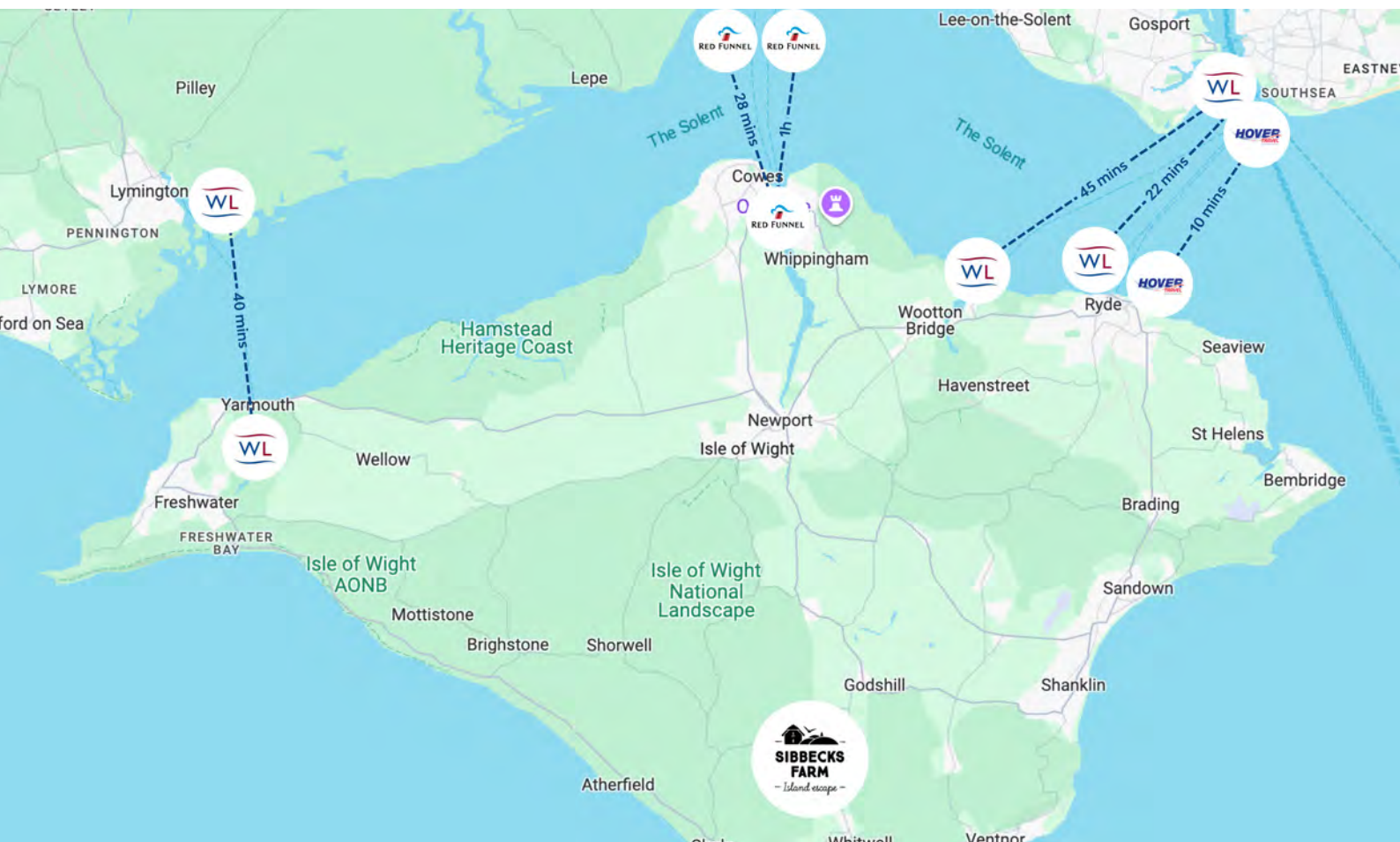
*Sibbecks Farm is located on the south of the Isle of Wight, near the coastal town of Ventnor, in an Area of Outstanding Natural Beauty.*

*The Isle of Wight is a diamond shaped gem of an island situated just a few miles off the South Coast of England. The island is famous for its stunning natural beauty, boasting picturesque coastlines, sandy beaches, rolling countryside and charming coastal towns and villages.*

*There are a lot of easy ways to get to the island if you're travelling from the mainland. Ferries carry car & foot passengers from both **Southampton & Portsmouth**, or why not start your corporate experience in style by travelling by Hovercraft!*

*There are frequent train services from **London via either Southampton or Portsmouth**. A door-to-door trip from London to the island can be done in just 2 hours.*

*We can help advise the best route for your team to take to get to Sibbecks Farm and can help arrange your transportation if required.*



## ACCOMMODATION OPTIONS

*If you're travelling from the mainland, your event could be a day trip to the Isle of Wight, but should you require overnight accommodation then we can help organise a suitable venue.*



### SIBBECKS FARM GLAMPING

*Stay with us at Sibbecks Farm under canvas in our luxury safari tents & bell tents. We can accommodate up to 15 people. Each safari tent has proper beds with top quality bedding & electric blankets, a fully equipped kitchen, dining area, mains electricity, hot water, wood burning stove, private toilet, and shower/bath.*

*Our bell tents can be set up alongside the safari tents and come fully furnished with quality beds & bedding, bedside tables, lighting and rugs.*



### HOTEL ACCOMMODATION

*We have a network of accommodation options from country pubs to hotels in nearby Ventnor, that we can recommend and help arrange as required.*



# PRICING & PAYMENT

## FROM £175 PER PERSON

We require a 25% deposit payment to secure your booking. The remaining 75% payment is due 30 days prior to the event.

## NEXT STEPS

Discuss your requirements with Vicki and Paul on:

☎ +44 (0)7361 010529    ✉ [info@sibbecksfarm.co.uk](mailto:info@sibbecksfarm.co.uk)

*“What a day! My first Magic Numbers team away day to the beautiful Isle of Wight, being hosted by the wonderful Vicki and Paul at Sibbecks Farm.*

*Being ‘In The Wild’ was the perfect opportunity to get to know my work colleagues better, to enjoy the amazing scenery on the Island and to unwind and laugh together. I say ‘wild’ - the venue itself is just beautiful, the wine and beer perfectly chilled and the facilities spot on. My favourite part of the whole day was attempting to build a waterproof shelter with what you could find around you on the ground, and watching the laughter on faces of others.”*



*“My personal highlight of the experience by far was the scavenger hunt. As someone that is not a super keen Rambler, I was pleasantly surprised how much fun I had walking through the Isle of Wight countryside whilst trying to fill a checklist of various plants and animals. The competition aspect of being split into three separate teams each with a unique route back to the farm definitely heightened the walking experience. The routes were just the right balance of easy to follow but also required some element of orienteering using a map.”*



